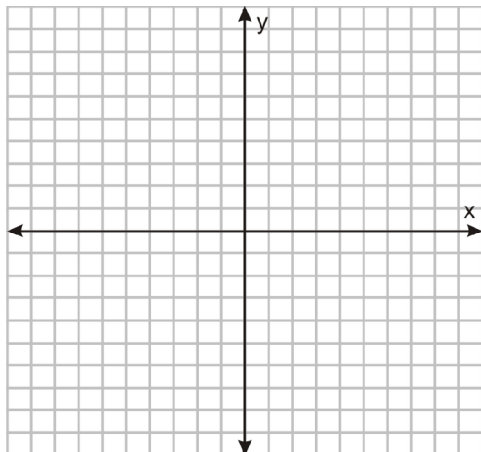


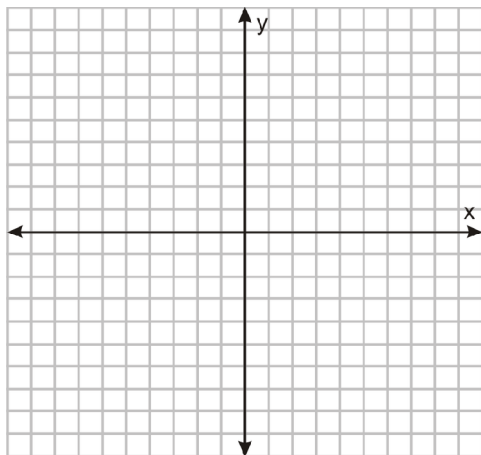
Exit Ticket (Quadratic Functions)

Graph the function. Identify the vertex and axis of symmetry.

1 $f(x) = x^2 + 4x + 1$

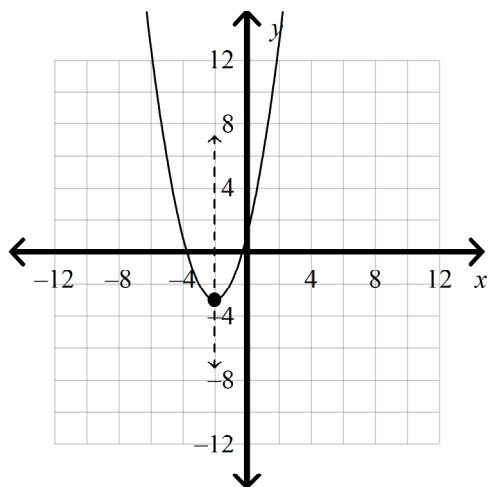


2 $f(x) = -2x^2 + 4x + 1$



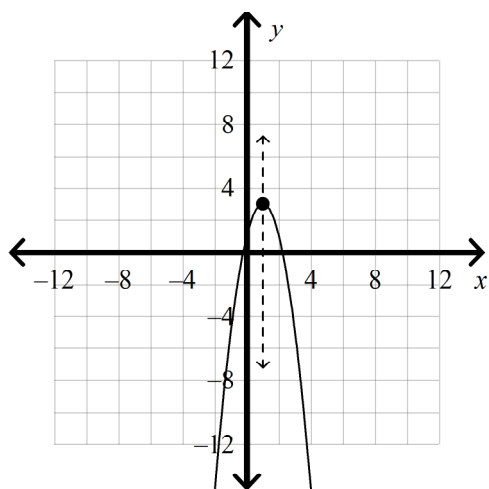
Exit Ticket (Quadratic Functions) Answer Section

1



axis of symmetry: $x = -2$
vertex: $(-2, -3)$

2



axis of symmetry: $x = 1$
vertex: $(1, 3)$