

Direct Variation

1) Miles (x)	25	50	75	100
Gallons (y)	1	2	3	4

Determine if this is a direct variation equation $\rightarrow \frac{1}{25} = .04$, $\frac{2}{50} = .04$, $\frac{3}{75} = .04$

$$\frac{4}{100} = .04$$

$$m = .04 = \frac{1}{25}$$

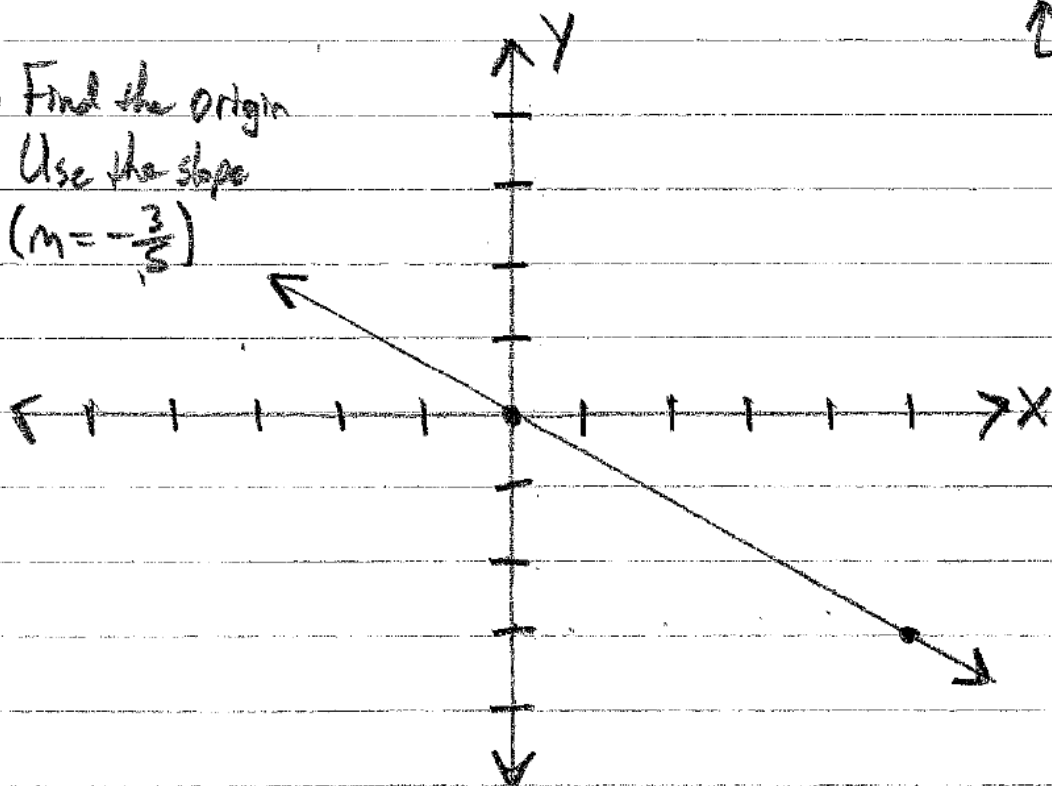
$$y = \frac{1}{25}x$$

2) Graph the direct variation equation $y = -\frac{3}{5}x$

① Find the origin

② Use the slope

$$(m = -\frac{3}{5})$$



Slope
 $(\frac{\text{Rise}}{\text{Run}})$